

**COMMITTED  
TO SAFETY**

**GUARANTEED  
QUALITY**

**EXCELLENT  
SERVICE**

**HIGH  
TECHNOLOGY**

**BEST PRACTICES  
AND PROCESSES**



**CHIP MONG  
CONCRETE**

ISO 9001 : 2015



**CHIP MONG  
CONCRETE**

ISO 9001 : 2015



**CHIP MONG  
CONCRETE**

ISO 9001 : 2015



## COMPANY PROFILE

As part of the Chip Mong Group (CMG), Chip Mong Industries (CMI) is an ISO -accredited company and one of the largest and trusted names in supplying the Cambodian construction sector with construction materials since 1982.

For more than a quarter of a century, Chip Mong Group has distributed a variety of construction materials. Now we have Chip Mong Concrete (CMC) to supply ready-mixed concrete. We supply the guaranteed-quality products, excellent services with standardized processes and using high technology, which ensures complete customer satisfaction.



**CHIP MONG**  
CONCRETE

**CHIP MONG**  
CONCRETE

YOUR SMART CHOICE

## EXCELLENCE IN SERVICE

Our operations teams stand ready to provide reliable & consistent services. Our engineers and technical teams are focused on meeting the customer needs by providing tailored technical support and practical solutions. We have invested in state of the art, batching plants, mixer trucks, pumping trucks and stationary trucks, to make sure we can supply all of our customers' demands. We manage our operations to ensure the right products are delivered on time to our customers' sites. Through setting of these objectives we will continue to strive to be the supplier of choice to the construction market and the go to consultant for all types of concrete and concrete applications.

## CONCRETE & PUMPING SERVICES

Offering prompt and affordable services for pumping with over 10 years of experience, we have a large GPS controlled fleet available 24 hours a day.

## PRODUCT FORTFOLIO

Due the wide diversity of construction projects, different applications of concrete are required. Chip Mong Concrete, therefore, has designed various types of concrete to meet our customers' requirements. Chip Mong Concrete ranges from general structure to special products for particular purposes; there are conventional designs, pumping, bore pile, slip form, light weight, waterproof and low shrinking / low heat concretes. Simply, when you use Chip Mong Concrete, you have chosen an experienced partner as the supplier of ready-mixed concrete for your projects.

## TYPES OF CONCRETE

### 1/ CONVENTIONAL & PUMPING CONCRETE



Designed for general structure. The strength is 18 -40 Mpa and the range of slump is 7.5 2.5 10.0 2.5cm. it needs 28 days to de-cast.

### 2/ POST TENSION CONCRETE



Designed for high early compressive strength. It needs only three days to de-cast.

### 3/ LARGE BORE PILE CONCRETE



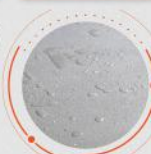
Designed for foundation. The range of slump is 15-20cm, which allows high workability of the concrete.

### 4/ HIGH STRENGTH CONCRETE



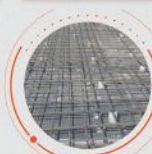
Designed for high-rise buildings and "Mega" projects. It has high compressive strength of more than 45 Mpa on the 28th day of casting.

### 5/ WATERPROOF CONCRETE



Designed for slab, water tank and swimming pool. It prevents water from passing through the concrete.

### 6/ LOW SHRINKAGE CONCRETE



Designed for long and thick slab. It reduces micro-fracture.



## QUALITY FOCUSED

Chip Mong Concrete supplies top quality products and services. Our quality control starts from raw material sourcing and selecting, product operating, material and concrete testing to final concrete. Quality for Chip Mong Concrete means serving the ready-mixed concrete that meet the required standard quality ordered, quantity & delivery time. Our competence and commitment is to remain the leading company providing ready-mixed concrete in Cambodia.

## QUALITY CONTROL

- ☑ Material Receiving Inspection
- ☑ Raw Material Testing
- ☑ Maintenance of Plant Equipment
- ☑ Site Inspection & Testing
- ☑ Inspection, Measuring and Test Equipment

## EXACT IN QUALITY

Applying advanced technology and modern methods through the manufacturing process, our plants use fully computerized control systems to meet the exact quality & quantity required by customer values & needs. This technology control of our plants can ensure the batching accuracy and reliable mixing performance. Recognizing the customer's valuer, our priority is "Exact in Quality".



## CMI HEALTH AND SAFETY / ENVIRONMENTAL POLICY

At Chip Mong we are committed to achieving and maintaining the highest practical standard of workplace health and safety in all our operations. our objective is to provide a work environment that is totally free of injuries and incident, whilst take care of the communities that co-exist with our operations.

### AT CHIP MONG WE BELIEVE

- ☑ Safety is everyone's responsibility;
- ☑ No job is so important that it cannot be done safely;
- ☑ All injuries are preventable;



## សុវត្ថិភាពជាមុន

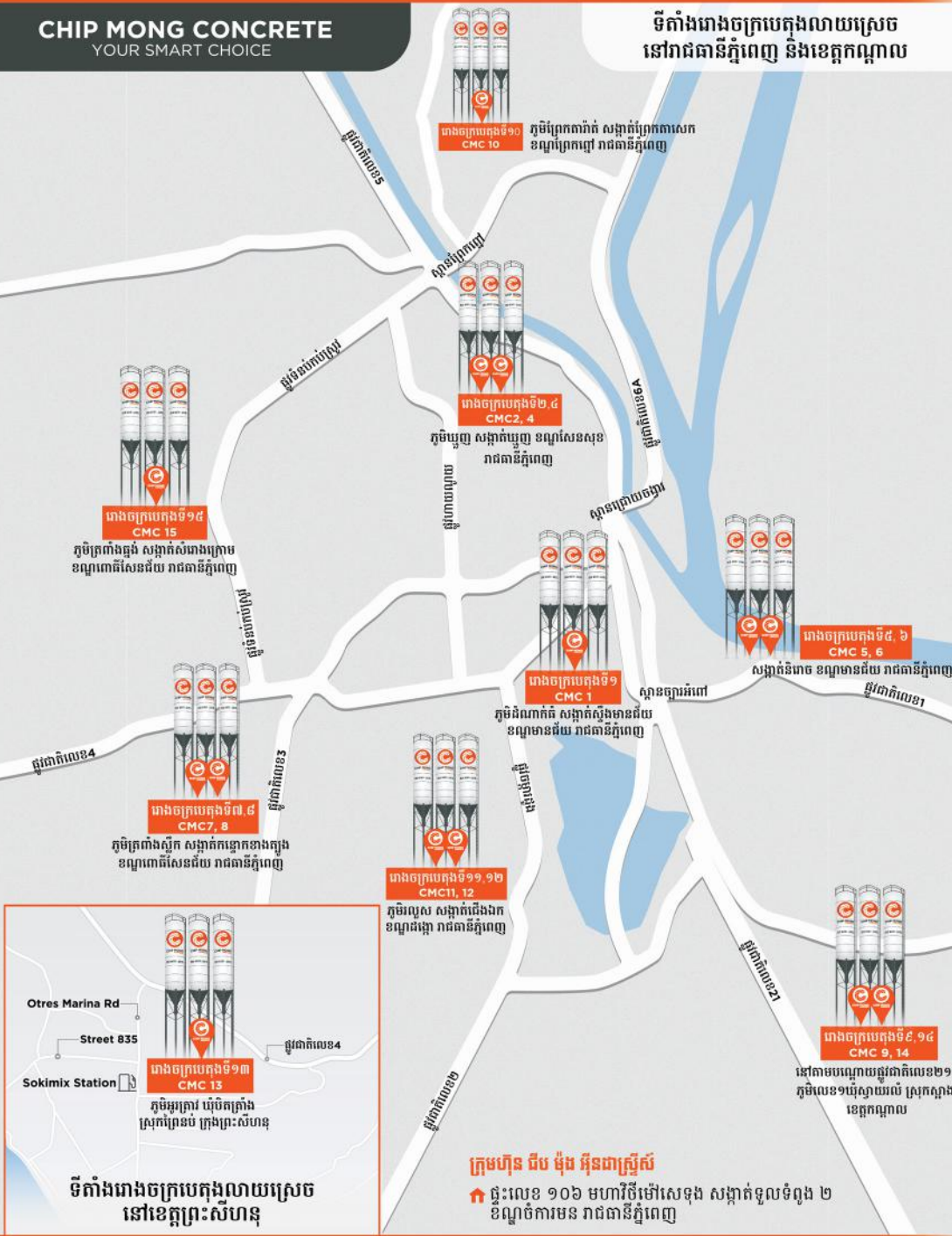
៦២ ចំណុច ច្បាប់មូលដ្ឋានសម្រាប់សុវត្ថិភាពការងារ

<p><b>១. ឧបករណ៍សុវត្ថិភាព</b></p>	<p><b>២. កន្លែងធ្លាក់</b></p>	<p><b>៣. ហាមការបំបែក និងការបញ្ជូន</b></p>	<p><b>៤. ការប្រតិបត្តិការ និងវិញ្ញាណប័ណ្ណ</b></p>	<p><b>៥. ការបើកកង់បំប្លែង</b></p>	<p><b>៦. ក្រុមសម្របការងារសុវត្ថិភាព</b></p>
<p><b>៧. ការស្តុកទំនិញ</b></p>	<p><b>៨. សុវត្ថិភាពនៅពេលបើកបរ</b></p>	<p><b>៩. ច្បាប់តាមដាន</b></p>	<p><b>១០. ការប្រើប្រាស់ក្រឡិចទ្រាហ្វូន</b></p>	<p><b>១១. ប្រើក្រវ៉ាត់បំប្លែង</b></p>	<p><b>១២. រោងការសម្រប</b></p>



**CHIP MONG CONCRETE**  
YOUR SMART CHOICE

ទីតាំងរោងចក្របេតុងលាយស្រេច  
នៅរាជធានីភ្នំពេញ និងខេត្តកណ្តាល



ទីតាំងរោងចក្របេតុងលាយស្រេច  
នៅខេត្តព្រះសីហនុ

**ក្រុមហ៊ុន ជីប ម៉ុង អ៊ិនធាស្ត្រីស៍**  
ផ្ទះលេខ ១០៦ មហាវិថីម៉ៅសេឌុប សង្កាត់ទួលទំពូង ២ ខណ្ឌចំការមន រាជធានីភ្នំពេញ